

READY TO MARKET RELEASES '25

WWW.GLOBAL-COSMETICS.COM



Content

06

Tik Tok Favorites

Harnessing big data and AI-driven insights with TrendCapture, Global Cosmetics deciphers industry trends, top products, and consumer preferences.

28

Texture Library

A curated collection of cutting-edge formulations, blending sensory delight with high-performance efficacy—from silky serums to velvety powders, ensuring flawless application.

49

SPF Innovations

Advanced sun protection formulas that defend against UVA/UVB rays while delivering skincare benefits—featuring lightweight daily sunscreens to water-resistant options.

19

Green Bio + Fibronectin

A powerhouse ingredient that boosts collagen production, restores elasticity, and enhances skin texture for a smoother, more resilient complexion.

40

Ingredient Library

A selection of our most potent, science-backed ingredients, each selected for its unique benefits—hydration, barrier protection, brightening, and anti-aging efficacy.

54

Base Makeup

Designed to enhance natural beauty with skincare benefits, our formulas range from lightweight tints to high-coverage foundations—infused with premium actives.

FOREWORD

Global Cosmetics Group is shaping the future of beauty with a forward-thinking approach to manufacturing trends for 2025. Our focus areas for the upcoming year include Texture Library, Ingredient Library, SPF Innovations, Base Makeup, TikTok Favorites, and Green Bio + Fibronectin. These key pillars represent our commitment to innovation, efficacy, and market-driven development.

As the beauty industry evolves, our research and development team continues to lead with cutting-edge advancements. The integration of low-molecule technology enhances ingredient penetration, delivering deep nourishment and efficacy. Our cosmeceutical claims ensure that skincare solutions are precisely formulated to meet the diverse needs of consumers.

Global Cosmetics Group's commitment to excellence is supported by a robust infrastructure that sets us apart:

- A state-of-the-art Cosmetic and Skincare Efficacy Testing Centre
- A fully equipped In-House Cosmetic and Skincare Testing Facility
- A dedicated In-House Dermatologist to validate product performance
- A pioneering Research & Innovation Centre for Skincare Raw Materials based in Guangzhou City, Guangdong, PRC
- An In-House Creative Team specializing in mockups, 3D renderings, and product technical design

From advanced formulations to innovative packaging, we are driving the next generation of beauty solutions. Our 2025 trends embrace the fusion of science and creativity, ensuring that brands stay at the forefront of the industry. Whether you are an established leader or looking to elevate your beauty brand, our comprehensive beauty library offers a roadmap to success.





**SKINTERTAINMENT
FOR ALL**

Expanding beyond just selling products, beauty brands are now focusing on creating immersive experiences that captivate and engage their customers on a deeper level. They are integrating entertainment, interactive content, and creative collaborations to build a stronger emotional connection with their audiences. From virtual shopping to music collaborations and gamified experiences, brands are transforming beauty into a lifestyle.



**ALGORITHMIC
BEAUTY**

AI is redefining beauty by pushing creative boundaries and reshaping identity, allowing for a new era of self-expression that transcends traditional norms. From hyper-realistic digital models to futuristic, otherworldly aesthetics, AI is expanding the definition of beauty beyond human limitations. Brands, artists, and influencers are leveraging AI to create virtual ambassadors, explore surreal visual effects, and challenge conventional beauty.



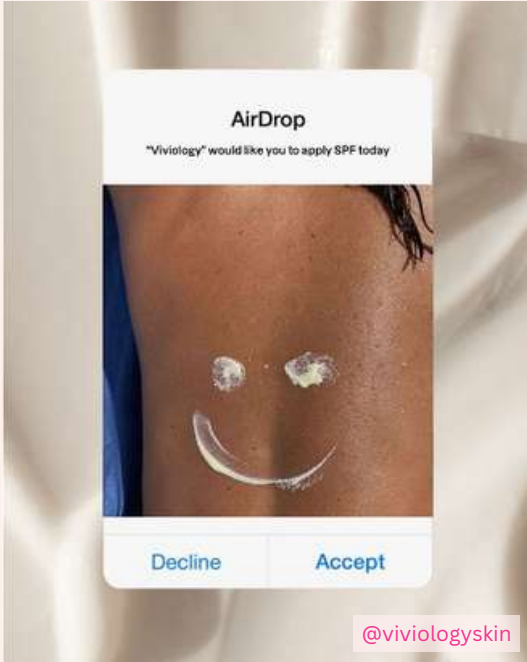
**BEAUTY
HOSPITALITY**

A new wave of beauty service offerings is shifting the traditional salon visit from a simple, transactional appointment to a holistic escape. Blending hospitality with beauty treatments transforms routine self-care into a more immersive, restorative experience. These elevated experiences—whether through luxurious environments, personalized treatments, or multi-sensory elements—allow clients engage in self-care on a deeper level.



**CHROME
MAKEUP**

Lustrous, glistening finishes evoke an otherworldly presence, reflecting how beauty is evolving alongside advancements in AI, virtual reality, and digital self-expression. By experimenting with reflective textures and bold applications, these looks push boundaries, turning makeup into a statement about the intersection of human creativity and the limitless possibilities of the future, going beyond mere trend—they symbolize a fusion of beauty and technology.



**SUNCARE
SKINIFICATION**

Suncare, once purely about protection, is now being reimagined as a beauty essential. Some Gen Z and Gen Alpha consumers are experimenting with sunscreen application techniques, such as selective placement for natural contouring or acne treatment—raising concerns among dermatologists. As beauty and skincare continue to merge, traditional heavy creams are being replaced with lightweight, playful formulations like scented gels and mists.



MASCULINE EVOLUTION

Masculinity is evolving, and society now expects more from men than ever before. Strength, financial stability, and emotional availability are all part of the modern male identity, with increasing cultural pressure to embrace vulnerability. Brands are adapting their messaging to align with this shift. As the definition of manhood continues to evolve, brands and cultural narratives are playing a key role in shaping a more inclusive and multidimensional perspective.



FINE FRAGRANCE

Luxury fragrances are becoming a must-have for Gen Z and older Gen Alpha, who see scent as an extension of their identity. With 70% of Gen Z believing that fragrance reflects who they are. With a growing appetite for unique, refined, and high-end fragrances, Gen Z is reshaping the industry. Brands are responding with bold innovations and signature scents designed to resonate with a generation that values self-expression through scent.



BACK TO SCHOOL BEAUTY

Once focused on new stationery and clothes to "grow into," today's teens and tweens see it as an opportunity to refresh their tech, fashion, and beauty routines. This shift highlights the growing importance of self-expression and personal branding among young consumers, making beauty and skincare an essential part of their back-to-school checklist. This shift highlights the growing importance of self-expression and personal branding among young consumers.



SCALP HEALTH

Once a niche category, hair growth has become a major focus, with both specialist brands and beauty giants introducing follicle-stimulating products. Factors such as stress, which affects two-thirds of people globally, and hair thinning caused by medications, have fueled this shift. The growing emphasis on hair density and hair issues goes beyond beauty—it's about enhancing self-confidence and overall wellbeing, marking the rise of skinification in haircare.



SUPER SPA

As more people prioritize their health, spas are evolving to offer state-of-the-art equipment, treatments, and personalized experiences. With 83% of people agreeing that beauty is rooted in inner wellbeing, wellness is now seen as a journey of curation rather than a simple transaction. This shift emphasizes the importance of immersive, individualized wellness experiences that support authentic wellbeing, reflecting diverse lifestyles and life stages.



.Tik
Tok

Leveraging big-data insights and our advanced AI tool, TrendCapture, Global Cosmetics explores the beauty industry —analyzing top products, consumer preferences, and emerging trends.



Selecting a standout product requires more than just a great formula, it needs to captivate, solve a real problem, and spark desire.

Here's what to consider:

THE WOW FACTOR

- A unique feature or problem-solving ability that feels fresh and innovative.
- Delivers instant results while remaining affordable.

EXCLUSIVITY MATTERS

- Opt for niche offerings that cater to a specific target group, such as:
- Products designed for teens or menopause skincare
- Solutions for East/Southeast Asian skin tones with dullness
- Visually appealing packaging and formulation aesthetics that stand out in videos and images.
- Evokes an emotional response—whether through luxury appeal or transformational results.

SOLVES A REAL PROBLEM

- Clearly identify a pain point and amplify it to drive demand.

SMART PRICING FOR IMPULSE BUYS

- TikTok-friendly beauty products typically fall in the \$15–\$30 USD range.
- Use Google's lookup tool to benchmark competitive pricing and position strategically.



HYDRATING MOISTURIZER

Key Ingredients:

Niacinamide, Vitamin B5, Vitamin E.



A lightweight, dermatologically tested moisturizer designed to deliver deep hydration. Formulated with a vegan, cruelty-free blend, it absorbs effortlessly, leaving skin soft, nourished, and refreshed.

MOQ 10,000 units.



BENCHMARK
Effaclar Mat Face Moisturizer
La Roche Posay
50ml
\$20.00



BRONZING DROPS

Key Ingredients:

Hyaluronic Acid.



A bronzing moisturizer with a lightweight, fragrance-free, and vegan formula. Enriched with Hyaluronic Acid and Glycerin, it hydrates and nourishes the skin while delivering a natural bronze glow. Contains 1% colorant for a subtle, even finish. Cruelty-free and dermatologically tested.

MOQ 10,000 units.



BENCHMARK
Bronzing Drops
ELF Skin
30ml
\$19.50



BRIGHTENING SERUM

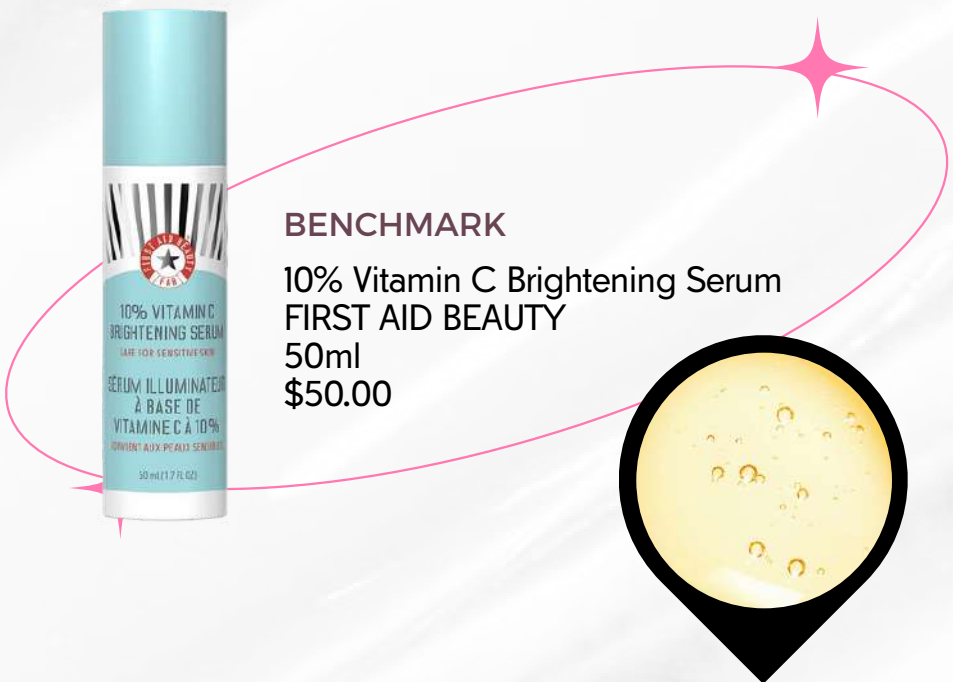
Key Ingredients:

10% Vitamin C



A fragrance-free, vegan brightening serum infused with 10% Vitamin C to enhance radiance and even skin tone. This cruelty-free formula revitalizes and nourishes the skin for a luminous, healthy glow.

MOQ 10,000 units.



BLUSH

Key Ingredients:

Vitamin E



A weightless, vegan cream blush infused with Vitamin E to hydrate and plump the skin while delivering a sheer veil of color. Its lightly emollient texture glides effortlessly, enhancing cheeks with a dewy, luminous finish for the perfect 'no-makeup makeup' look. Fragrance-free and cruelty-free.

MOQ 10,000 units.





PLUMPING LIP BALM

Key Ingredients:

Vitamin E, Peptide, Chili Extract, Ginger Flavor



A high-shine, high-pigment plumping lip formula infused with Spicy Ginger, Chili Extract, and Peptides for an instant and long-term volumizing effect. Over 5% pigment formula deeply moisturizes while delivering bold color in a single swipe. Vegan and cruelty-free for pro-performance results.

MOQ 10,000 units.



BENCHMARK
Duck Plump
NYX
6ml
\$15.25



OIL BALM

Key Ingredients:

Vitamin E



A pigmented lip oil balm with a sleek click-up applicator that dispenses just the right amount of formula for effortless use. This lightweight, buildable balm delivers 12-hour hydration and all-day comfort while keeping lips nourished and soft. The non-sticky, high-shine finish makes it perfect for everyday wear.

MOQ 10,000 units.



BENCHMARK
Fat Oil Slick Click
NYX
2g
\$14.70



BLURRING STICK

Key Ingredients:

Vitamin E



A lightweight, ultra-soft balm-to-powder formula that instantly mattifies and blurs texture imperfections. This formula absorbs excess oil while delivering a soft matte finish. Infused with skin-clarifying, oil-absorbing actives, it keeps makeup fresh and shine-free throughout the day.

MOQ 10,000 units.



BENCHMARK
Blot & Blur Matte Stick
NUDESTIX
10g
\$37.85



JELLY TINT

Key Ingredients:

Sorbitol



A long-lasting, hydrating lip and cheek stain with a unique bouncy jelly texture. Delivers a sheer, buildable burst of color with a refreshing, cooling sensation. Formulated with sorbitol and lip-safe colorants, this fragrance-free, vegan, and cruelty-free formula.

MOQ 10,000 units.



BENCHMARK
Jelly Tint Blush + Lip Stain
MILK Makeup
5g
\$25.00



GEL PRIMER

Key Ingredients:

Niacinamide, Hyaluronic Acid, Aloe Vera Water



A gel-based, hydrating face primer that smooths skin while gripping makeup for long-lasting wear. Infused with Niacinamide, Hyaluronic Acid, and Aloe Vera Water, it nourishes and refreshes the skin while providing a dewy, translucent finish suitable for all skin tones.

MOQ 10,000 units.



BENCHMARK
Hydro Grip Primer
MILK Makeup
45ml
\$23.50



SETTING SPRAY

Key Ingredients:

With Niacinamide, Hyaluronic Acid, Aloe Vera, Almond Oil, Vitamin E.



A hydrating, alcohol-free setting spray that locks in makeup while nourishing the skin. Infused with Niacinamide, Hyaluronic Acid, Panthenol, Aloe Vera, and a blend of Olive, Almond, and Meadowfoam Seed Oils, it delivers long-lasting moisture and a refreshed finish.

MOQ 10,000 units.



BENCHMARK
Hydro Grip Setting Spray
MILK Makeup
45ml
\$19.25



SHIMMER LIP BALM

Key Ingredients:

Coconut oil, Sunflower Seed Oil, Hyaluronic Acid, Vitamin E.



Juice up your pout with this ultra-moisturizing lip treatment, featuring a plush sponge-tip applicator. Infused with lip-conditioning ingredients like Coconut Oil, Sunflower Seed Oil, Grape Seed Oil, Hyaluronic Acid, and Vitamin E, it deeply hydrates, smooths lip lines, and enhances a plumper, juicier look.

MOQ 10,000 units.



BENCHMARK

Maracuja Juicy Plumping Lip Oil
TARTE
2.4ml
\$34.55



SHIMMER BODY MIST

Key Ingredients:

Alcohol Base, SPF, Shimmer, Vitamin E.



A luxurious SPF 40 spray that delivers broad-spectrum UVA/UVB protection with a shimmering, pearlescent finish. This lightweight, alcohol-based mist absorbs seamlessly, leaving skin non-greasy and radiant. Infused with Vitamin E and skin-loving ingredients.

MOQ 10,000 units.



BENCHMARK

Sheer Body Mist SPF 42
KOPARI
4.7 oz
\$43.00



SHIMMER GLOW SPF

Key Ingredients:

Chemical Sunscreen, Shimmer, Natural Oils.



This SPF 40 all-over sun protection glides onto the face and body for targeted full coverage. The lightweight, moisturizing formula is infused with naturally derived oils. Vegan and cruelty-free, this sun care essential soothes the skin with calming ingredients, making it both protective and luxurious.

MOQ 10,000 units.



BENCHMARK
Sheer Stick Sunscreen SPF 40
KOPARI
1.0 oz
\$15.25



GLOW TINTED SPF

Key Ingredients:

SPF40, Cica Extract.



This SPF 40 glowy tinted sunscreen hydrates, primes for makeup, and enhances skin with a radiant, dewy finish. The lightweight, moisturizing formula delivers expert sun protection, the Cica Extract keep skin luminous and fresh. This vegan and cruelty-free formula is perfect for daily wear.

MOQ 10,000 units.



BENCHMARK
Glowscreen Sunscreen SPF 30
Supergoop
50ml
\$42.20



COLOR CHANGING BALM

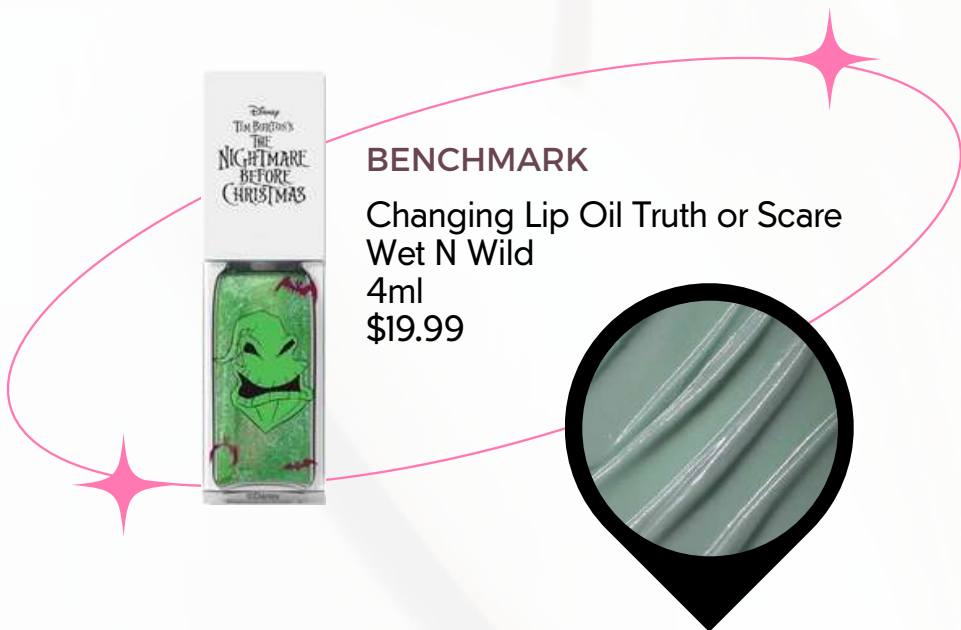
Key Ingredients:

Olive Oil, Jojoba Oil, Squalane, Meadowfoam Seed Oil.



A hydrating lip oil that reacts to your natural pH, creating a custom pink shade unique to you. Infused with olive oil, jojoba oil, squalane, and meadowfoam seed oil, it nourishes, smooths, and softens lips while keeping them kissably soft. Fragrance-free, vegan, and not tested on animals.

MOQ 10,000 units.



PEEL LIP LINER

Key Ingredients:

Natural Humectant



A long-wear, peel-off lip liner stain that keeps lips flawless all day and night without constant reapplication. Infused with nourishing ingredients, it hydrates while delivering a smudge-proof, semi-permanent color for plump, luscious lips. Vegan, cruelty-free, and enriched with natural humectants for extra care.

MOQ 10,000 units.





MELTING CLEANSER BALM

Key Ingredients:

Jobaba Oil, Wheatgerm Oil, Shea Butter, Squalane, Vitamin E.



A luxurious oil-based cleanser with a melty texture that transforms into a hydrating milk upon contact with water. Effortlessly dissolves makeup while moisturizing the skin, leaving it soft and refreshed. Enriched with jojoba oil, shea butter, and vitamin E for deep nourishment. Vegan and cruelty-free.

MOQ 10,000 units.



CHARCOAL CLEANSER BALM

Key Ingredients:

Charcoal Powder, Meadowfoam Seed Oil.



A powerful yet gentle makeup remover infused with charcoal powder to detoxify and deeply cleanse pores, removing excess oil and impurities. Leaves skin feeling clean, soft, and balanced without stripping moisture. Fragrance-free, vegan, and cruelty-free.

MOQ 10,000 units.





GLASS LIP SCRUB

Key Ingredients:

Shea Butter, Sugar.



Gently exfoliates, moisturizes, and smooths lips, leaving them satin-soft and fuller-looking. Perfect for removing dry skin and lip product stains. Infused with shea butter and sugar for a nourishing, hydrating finish.

MOQ 10,000 units.



BENCHMARK
Sugar Lip Scrub
SkinFood
14g
\$12.87



GLASS LIP BALM

Key Ingredients:

Shea Butter, Vitamin E.



A moisture-rich, subtly tinted lip balm that keeps lips extra soft and hydrated. Infused with Shea Butter and Vitamin E for deep nourishment. Vegan formula and not tested on animals.

MOQ 10,000 units.



BENCHMARK
Lip Glow Balm
Laneige
10g
\$24.51



GLASS LIP MASK

Key Ingredients:

Shea Butter, Coconut Oil, Jojoba Oil, Squalane.



An ultra-hydrating formula packed with Hyaluronic Acid, Vitamins E & C, Shea Butter, Coconut Oil, Jojoba Oil, and Squalane. Delivers intense moisture and antioxidants for soft, smooth lips. Vegan and not tested on animals.

MOQ 10,000 units.



BENCHMARK
Lip Sleeping Mask
Laneige
20g
\$32.67



BLACK BLUSH

Key Ingredients:

Vitamin E, Jojoba Oil, Squalane.



A transformative balm that shifts from mysterious black to vibrant pink, adapting to your unique pH for a one-of-a-kind glow. Infused with Jojoba Oil and Squalane, it nourishes while delivering a luminous, dewy finish. Fragrance-free, vegan.

MOQ 10,000 units.



BENCHMARK
PH Cream Colour Changing Blush
Lottie LONDON
1.8g
\$10.62



POCKET BLUSH

Key Ingredients:

Natural Derived Oil, Vitamin E.



A lightweight, on-the-go cream blush that melts smoothly onto cheeks and lips for a satiny, diffused flush. Hydrating yet non-greasy, it delivers a long-wearing, glowy finish for baby-soft skin. Fragrance-free, vegan, and cruelty-free.

MOQ 10,000 units.



BENCHMARK
Pocket Blush
Rhode
5.3g
\$72.15





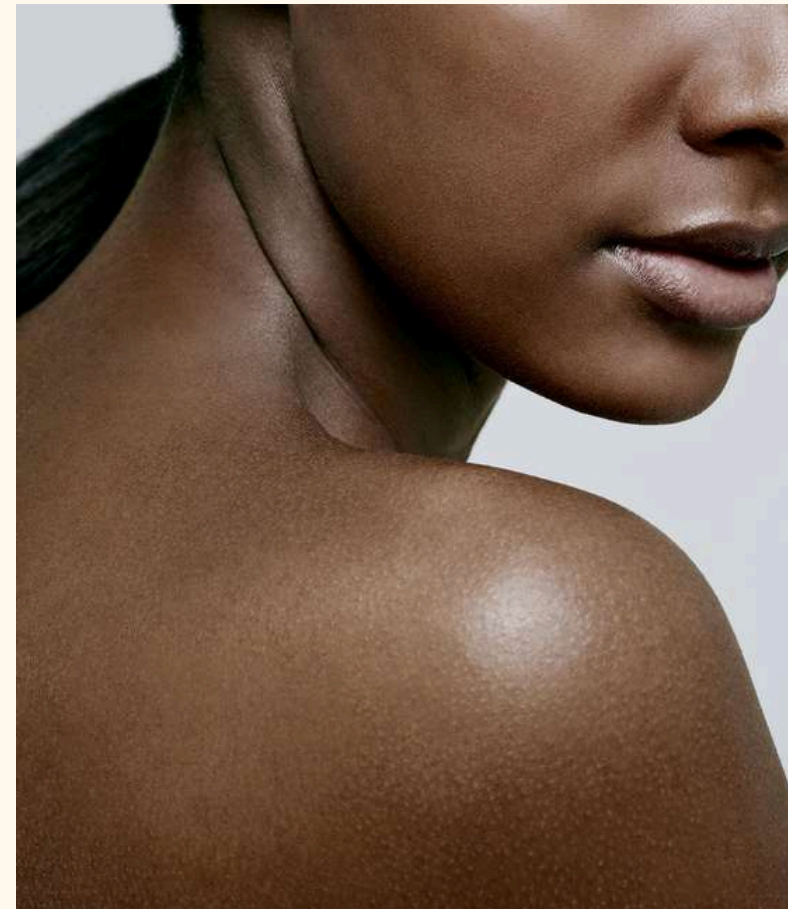
FIBRONECTIN SERIES

Introducing Fibronectin – a powerhouse ingredient that works by coaxing skin cells to release essential proteins like collagen. It rebuilds elasticity, giving the skin a resilient bounce, and refines texture, leaving it smoother than ever. This ingredient harmonizes the interplay between cells and the extracellular matrix, elevating microcirculation within and around the skin.

FIBRONECTIN

Patented Ingredient from Global Cosmetics Group

Fibronectin is a powerful **skin-repairing ingredient** that functions similarly to Epidermal Growth Factor (EGF) but without safety concerns. It **accelerates skin renewal** by supporting cell movement, adhesion, growth, and tissue repair, making it a highly effective ingredient for skin healing and rejuvenation.



Skbrella™ Calm

Soothe & Calm

Derived from ancient Chinese medicine formulas and modern pharmacology.
Patented soothing ingredients that effectively address allergens and inhibit TRPV1 receptors, providing immediate calming and building skin barrier in the long term.



Chinese Licorice

Licorice is a powerful medicinal herb known for its soothing and skin-brightening benefits. In traditional Chinese medicine, it's considered a top-tier herb with anti-inflammatory, moisturizing, and whitening properties.



Baikal Skullcap

Baikal Skullcap's dried roots are the key medicinal part, packed with powerful compounds like baicalin and wogonin. It's valued for its anti-inflammatory, antioxidant, anti-aging, and soothing benefits, making it a popular ingredient in skincare.



Chinese Peony

The medicinal part of Paeonia is the dried, peeled root. Its main active components include paeoniflorin, hydroxypaeoniflorin, paeoniflora, and paeonolide. Paeonia exhibits antioxidant and anti-inflammatory effects, among other benefits.



Asiatic Pennywort

The main active components of this plant include flavonoids, phenolic acids, and terpenoids, which provide antioxidant, anti-inflammatory, and antimicrobial effects.

SKBRELLA™ CALM

Key Ingredients:

2.5% Skbrella™Calm, Cica.



Skbrella™ Calm is a soothing formula designed to reduce skin sensitivity and relieve symptoms like stinging, itching, burning, redness, and dryness. Enriched with Ceramide, Panthenol, and Shea Butter, it enhances hydration, strengthens the skin barrier, and promotes a smooth, resilient complexion. Vegan and fragrance-free.

MOQ 10,000 units.



SKBRELLA™ CT CICA

Key Ingredients:

Natural Derived Oil, Vitamin E.



A lightweight, yellowish transparent liquid that delivers quick hydration while creating an immune barrier for the skin. Infused with Betaine, Panthenol, and Allantoin, this formula soothes, moisturizes, and strengthens the skin barrier for a smooth, non-greasy feel.

MOQ 10,000 units.



LOTUS ANTI-WRINKLE CREAM

Key Ingredients:

2.5% Skbrella™Calm, Cica.



A rich moisturizer that fights oxidative stress, reducing dullness, redness, and rough texture. Powered by Skbrella™ NNL, it delivers antioxidant protection, inhibits collagenase and elastase activity, and supports skin revitalization. This formula significantly improves wrinkles at the outer corners of the eyes for a smoother, youthful look.

MOQ 10,000 units.



SKBRELLA™ SKIN PROTECTION SHIELD

Key Ingredients:

Skbrella™ 5-Dimensional Skin Protection Shield



This powerhouse oil serum soothes stinging, itching, burning, redness, and dryness while strengthening the skin barrier. Enriched with Gold Oil Complex, including Hippophae Seed Oil, Meadowfoam Seed Oil, Prinsepia Utilis Oil, and Silybum Marianum Seed Oil, it's rich in linoleic acids to nourish, restore, and fortify the skin for a resilient, healthy glow.

MOQ 10,000 units.



MULTIBRIT™ PEF AMLA - WHITENING SERUM

Key Ingredients:


Multibrit™PEF



Powered by Amla Fruit Extract, this serum brightens skin, fights aging, and boosts renewal. Rich in polyphenols, it inhibits melanin for a radiant complexion, while antioxidants protect against oxidative stress. Natural acids gently exfoliate, accelerating skin renewal for a smoother, youthful glow.

MOQ 10,000 units.

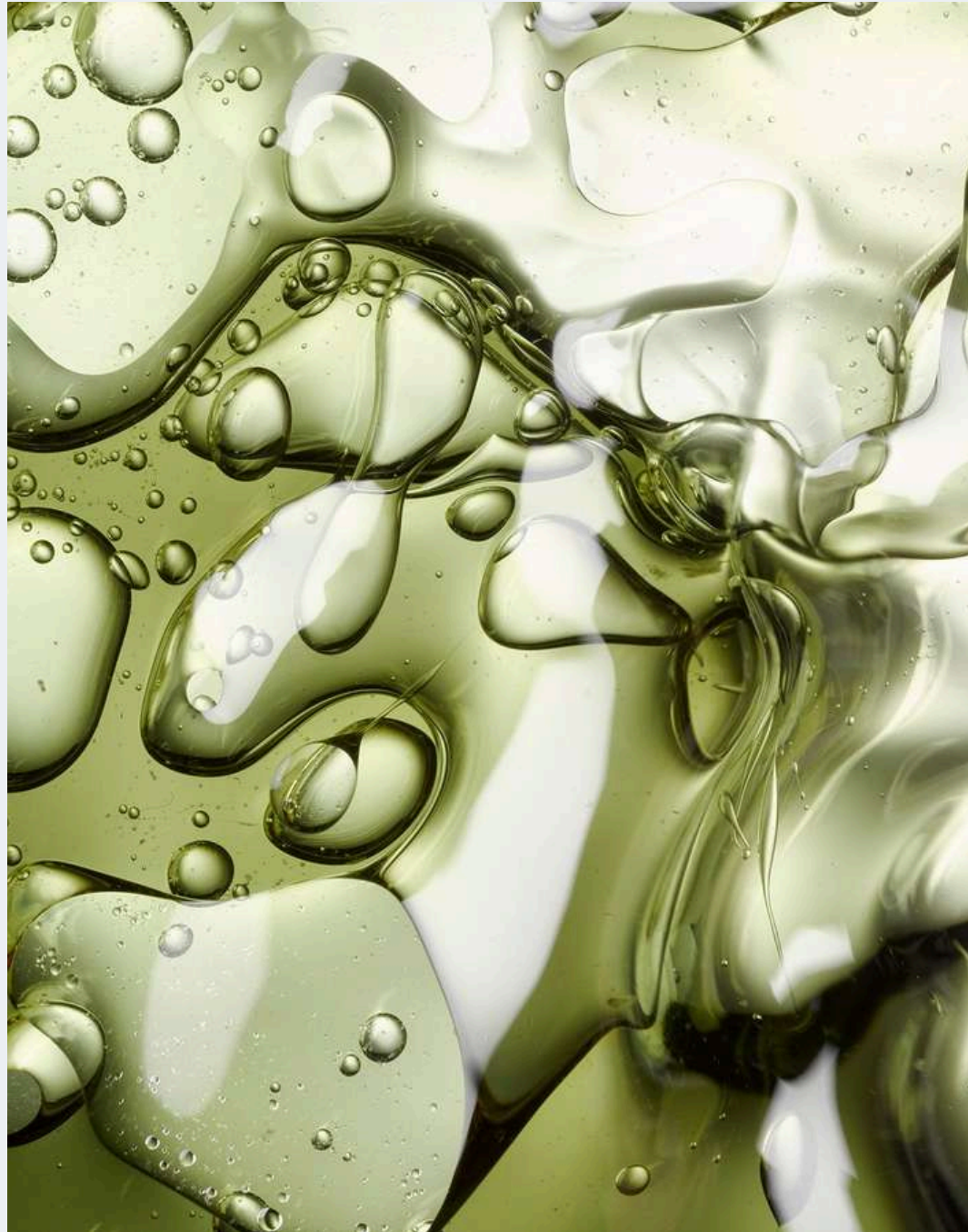


The background is an abstract, high-magnification photograph of a liquid, likely oil or a cosmetic emulsion, flowing and forming various shapes and droplets. The colors range from light cream to deep, dark olive green, with bright highlights reflecting light. The overall effect is one of fluidity and organic movement.

Our Hero Ingredient Library is a carefully curated selection of powerful, science-backed ingredients that drive the efficacy of skincare and cosmetic formulations. Each ingredient is chosen for its unique benefits, ranging from hydration and barrier protection to brightening and anti-aging properties.

Skbrella™ FN

Fibronectin Skin Repair Set



Innovation

Trending Patented Technology

Fibronectin **supports skin balance** by regulating the interaction between skin cells and their surrounding environment, ensuring overall skin health. Its ability to stimulate antibody production by binding to immune cells enhances the skin's defense system, helping to slow down aging. By guiding cellular movement and optimizing cell renewal, **Fibronectin ensures a healthy balance between old and new cells, keeping the skin looking vibrant, smooth, and well-maintained.**

Skbrella™ FN is bio-synthesized by

- Alfabody® AI Innovation
- HD 3.0 High-Density Fermentation Technology
- pharmaceutical-quality purification technique



SKBRELLA™ FN FIBRONECTIN SKIN REPAIR SET GENETIME

Key Features:

- Alfabody® AI Innovation
- HD 3.0 High-Density Fermentation Technology
- Pharmaceutical-quality purification technique

Technology & Philosophy

This formula utilizes Freeze-Drying Preservation Technology, combining freeze-drying and vacuum preservation to maintain ingredient potency, ensuring revitalization, activation, and targeted skin repair.

Guided by a philosophy of repair, soothing, and hydration, the formulation includes:

- Skbrella™ FN: Advanced repair for skin regeneration.
- Skbrella™ Calm: Soothing action through the reduction of inflammatory factor expression and inhibition of TRPV1 receptors.
- Hydration Complex (HA + γ-PGA): A dual approach to hydration—providing both external and internal moisture retention.

Skbrella™ FN Freezing Duo consists of 150mg Fibronectin Freeze-Dried Powder and 6ml Fibronectin Freezing Solvent, delivering high stability and effectiveness in skin renewal and restoration.



SKBRELLA™ FN GENETIME CAPSULES

Key Features:

Alfabody® AI Innovation

HD 3.0 High-Density Fermentation Technology

Pharmaceutical-quality purification technique

A high-performance skin repair treatment featuring Skbrella™ FN Fibronectin at 2000PPM for deep repair, cell migration, and barrier restoration. Clinically proven to accelerate wound healing and promote skin cell multiplication, outperforming competitor products.

Fragrance-Free | Alcohol-Free | Pigment-Free

- Repair & Soothe: Skbrella™ FN reduces inflammation and enhances skin renewal.
- Moisturizing Power: Combines HA + γ -PGA for both immediate and long-term hydration.
- Advanced Technology: Supports wound healing with high bioactivity, ensuring optimal skin recovery.

Advanced Skin Repair & EGF Alternative

- Fibronectin delivers reparative effects similar to EGF (Epidermal Growth Factor) by promoting cell migration, adhesion, proliferation, and tissue repair. It aids in epidermal regeneration, granulation tissue formation, and dermal-epidermal barrier reconstruction. Unlike EGF, which was banned in 2019 due to safety concerns, Fibronectin is a legally approved, effective substitute for accelerated skin healing.



texture library

Our Texture Library is a curated collection of innovative formulations designed to elevate skincare and cosmetic experiences. Each texture is crafted with precision, balancing sensory appeal with high-performance efficacy. From lightweight gels to rich creams, silky serums to velvety powders, our textures ensure seamless application, superior absorption, and long-lasting comfort.

COLLAGEN JELLY CREAM

Key Ingredients:

Betaine
Hydrolyzed Collagen
Euglena Gracilis Polysaccharide

This skin-softening formula enhances texture, elasticity, and hydration, reducing fine lines and wrinkles. Hydrolyzed Collagen boosts skin elasticity, while Euglena Gracilis Polysaccharide deeply hydrates, soothes, and fortifies the skin barrier. A blend of silicones and antioxidants creates a silky, lightweight feel, locking in moisture and protecting against oxidative stress.

MOQ 10,000 units.



SORBET MELTING CREAM

Key Ingredients:

Niacinamide
Allantoin
Panthenol

Perfect for all-day use, this formula delivers deep hydration and soothing benefits while absorbing quickly without greasiness. As a mask, it provides instant relief after sun exposure or for calming irritation. The smooth, refreshing texture mimics melting ice for a cooling sensation, leaving a lightweight, silky finish. Packed with antioxidants, it protects and repairs the skin for a healthy, radiant glow.

MOQ 10,000 units.



GLASS SKIN GEL CREAM

Key Ingredients:

Skbrella™
Vitamin E
Meadow foam Seed Oil
Rosa Damascene Flower Oil

This luxurious formula exhibits a translucent sheen, transforming into a silky oil upon contact with the skin. As a face cream, it eliminates dryness, flakiness, and roughness, restoring a radiant glow. As a primer, it creates a flawless base that adheres seamlessly without settling into fine lines, achieving a dewy, transparent finish.

MOQ 10,000 units.



CUSHION MOISTURE CREAM

Key Ingredients:

Xylitylglucoside
Anhydroxylitol
Xylitol

This ultra-lightweight, water-rich oil-in-water gel delivers deep hydration and moisture retention with a smooth, cushion-like feel. Formulated with a powerful humectant, it attracts and locks in moisture without heaviness, ensuring long-lasting hydration. With only 10 essential ingredients, this minimalist formula provides a lightweight, silky texture that leaves skin refreshed, soft, and nourished.

MOQ 10,000 units.



GOLDEN HYDRO CREAM

Key Ingredients:

Squalane
Sodium Hyaluronate
Mannitol

This crystal-clear gel, infused with golden particles, transforms into a milky, nourishing cream upon application. It provides deep hydration, a silky feel, and a glowing effect while forming a moisture-locking film on the skin’s surface. The gel-to-cream transition delivers a smooth, creamy texture that enhances hydration and leaves the skin radiant and replenished.

MOQ 10,000 units.



COOLING JELLY CREAM

Key Ingredients:

Centella Asiatica Extract
Squalane
Stephania Tetrandra Root Extract

This refreshing gel, infused with soft microcapsules, bursts upon application, releasing powerful active ingredients for deep hydration and repair. Liposome-encapsulated vitamins B and C protect against free radical damage, while patented Cica extract soothes and strengthens sensitive skin.

MOQ 10,000 units.



ESSENCE-IN OIL CREAM

Key Ingredients:
Sodium Hyaluronate
Centella Asiatica Extract
Squalane
Stephania Tetrandra Root Extract

Double Transformation Nourishing Technology—a high-quality cream that transitions from cream to milk to oil upon application. Infused with natural orange blossom essential oil, this rich yet lightweight formula melts into a soothing emulsion before transforming into a nourishing, transparent oil with gentle massage. With hydrating polysaccharides and anti-inflammatory antioxidants, it deeply moisturizes, soothes, and enhances skin softness for a radiant,

MOQ 10,000 units.



PEPTIDE FACE CREAM

Key Ingredients:
Argireline
Skbrella™ FN
Collagen

Powered by Double Transformation Nourishing Technology, this oil-in-water formula transitions from cream to milk to oil, delivering deep nourishment while maintaining a lightweight, matte texture. It locks in nutrients, providing hydration without stickiness, while tightening and smoothing fine lines for a firmer, more youthful complexion. A hexapeptide solution designed to visibly reduce wrinkles and improve skin texture.

MOQ 10,000 units.

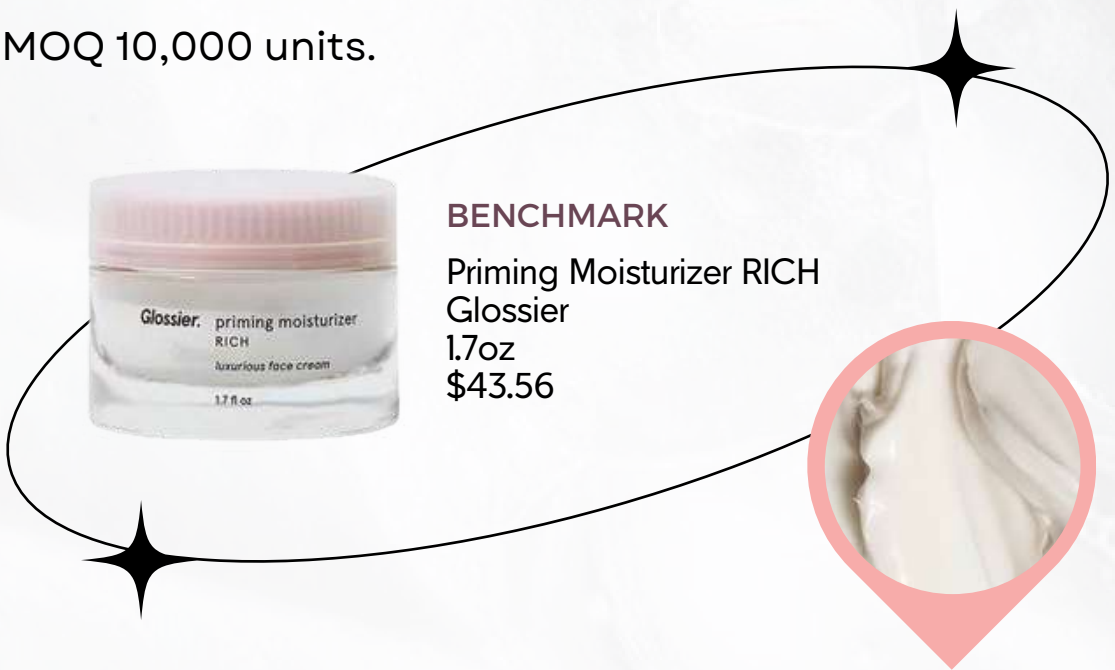


HIGH RADIANCE CREAM

Key Ingredients:
Sodium Hyaluronate
Centella Asiatica Extract
Squalane
Vitamin E

A Moisturizer + Primer hybrid that hydrates, nourishes, and enhances skin’s natural radiance. Infused with a Vitamin C + E Synergistic Antioxidant Formula, it protects against free radicals while improving texture and luminosity. Featuring silicone for a silky-smooth finish, this formula creates a high-luster shimmer effect, reflecting light for a healthy, glowing complexion. It plumps and hydrates the skin, ensuring a flawless, even foundation application without greasiness.

MOQ 10,000 units.



BENCHMARK
Priming Moisturizer RICH
Glossier
1.7oz
\$43.56

INSTANT SMOOTHING CREAM

Key Ingredients:
Lactobacillus
Panax Ginseng Root Ferment Filtrate
Hydrolyzed Ginseng Saponins
Argireline

A silky cream with soothing, antioxidant properties that help prevent premature aging. Infused with a hexapeptide solution, it visibly reduces fine lines—just apply, pat, and watch them fade. Its moisturizing yet lightweight texture offers excellent spreadability, leaving a soft-focus matte finish that enhances skin like a beauty filter.

MOQ 10,000 units.



BENCHMARK
Barrier Build Skin Protectant
ILIA
50ml
\$70.57

PREBIOTICS RESCUE CREAM

Key Ingredients:
Prebiotics (Yeast Extract)
Purslane Extract
Soy Milk Ferment Filtrate
Hyaluronic Acid

A creamy formula enriched with prebiotics and yeast extract to balance the skin microbiome and strengthen the barrier. Purslane and soymilk ferment filtrate soothe and repair, while hyaluronic acid deeply hydrates. Niacinamide brightens, peptides firm, and shea & cocoa butter provide lasting moisture. Ectoin protects against environmental stress, revitalizing tired, dull skin for a healthy glow.

MOQ 10,000 units.



PINK BRIGHTENING MASK

Key Ingredients:
Niacinamide
Pearl Powder Peptide (Carnosine)
Hyaluronic Acid
Hydrogel Beads

This velvety creamy mousse mask, infused with round hydrogel beads, works wonders to reduce dullness and hydrate the skin. In just 15 minutes, it eliminates dullness for a radiant, glowing complexion. Niacinamide and pearl powder team up to brighten the skin, while also helping to tighten and firm. The deep moisturizing and hydrating properties leave your skin feeling soft, smooth, and rejuvenated. Perfect for a quick, refreshing skincare boost.

MOQ 10,000 units.



AHA MINT CLEANSING MASK

Key Ingredients:

- Kaolin Clay
- Manicouagan Clay
- AHAs (Mandelic acid + Lactobionic acid + Gluconolactone)
- Patent Cica Extract
- Witch Hazel
- Panthenol
- Peppermint Essential Oil

This powerful mask combines 8% Manicouagan clay and 10% American kaolin clay, offering a deep cleanse by absorbing dirt and impurities. AHAs, including Mandelic, Lactobionic, and Gluconolactone, gently exfoliate and remove dead skin cells, unclogging pores for a smoother complexion. The high-active Patent Cica extract soothes and calms the skin, while Witch Hazel water refines pores and controls oil. Panthenol deeply moisturizes, hydrates, and softens, ensuring your skin feels refreshed. Peppermint essential oil adds a cooling, refreshing sensation, and the smooth, gel-like texture makes for a comfortable application. Enriched with botanical extracts and Beeswax, this formula provides the perfect balance of exfoliation, oil control, and skin soothing.

MOQ 10,000 units.



ALPINE CICA PURIFYING CLAY MASK

Key Ingredients:
Kaolin Clay
Carbon Powder Patent
Cica extract
Beta Glucan

This unique jelly-like mask purifies and refreshes the skin with a bouncy, smooth texture that spreads effortlessly. Kaolin clay and carbon powder work together to absorb dirt, impurities, and excess oil without drying or cracking, ensuring a comfortable feel. High-active Cica soothes and repairs skin from UV damage while providing deep hydration. Experience a clean, refreshed, and balanced complexion with every use.

MOQ 10,000 units.



BENCHMARK
Hyaluronic Acid Cleanser
INKEY LIST
100ml
\$10.83

CHARCOAL CLEANSING MASK

Key Ingredients:
Bamboo Charcoal
Beta Glucan
Betaine

This clear jelly mask transforms into gray clay as it cleanses, hydrates, and cools the skin. Featuring encapsulated bamboo charcoal, it gradually releases during use to provide effective oil control without irritation. Beta Glucan from Yunnan helps repair UV damage, while Betaines deeply moisturize, leaving the skin nourished and soft. This formula is gentle and provides long-lasting hydration, forming a protective barrier that supports skin repair.

MOQ 10,000 units.



BENCHMARK
Skin Zyme®
Jan Marini
57g
\$62.83

ROSEMARY CLAY MASK

Key Ingredients:
Rosemary Clay
Green Bamboo Clay
Saccharomyces (Zinc Yeast)
Patent Cica extract

Formulated with 15% Rosemary Clay for cleansing and oil control and 10% Green Bamboo Clay for deep purification and water-oil balance, it effectively removes impurities without stripping the skin. Enriched with Zinc Ferment (Zinc Yeast), it provides enhanced oil control and anti-radical protection, while Dipotassium Glycyrrhizate and high-active Patent Cica Extract work together to calm and soothe the skin. Infused with Centella Asiatica , this formula leaves skin purified.

MOQ 10,000 units.



BENCHMARK
Instant Detox Mask for Women
Caudalie
2.5oz
\$25.00

REISHI RESCUE MASK

Key Ingredients:
Reishi Clay + Black Tea Ferment
Soft Clay
Hyaluronic Acid
Niacinamide

This soft clay mask blends Reishi Clay and Black Tea Ferment instantly reduces dullness while providing deep hydration and antioxidant protection. Niacinamide works to brighten the complexion by inhibiting tyrosinase activity and melanin synthesis, while H.A improves skin suppleness. Infused with Cica for soothing benefits and Shea Butter for deep moisturization. The rich botanical scent from natural plant extracts leaves your skin refreshed, radiant, and beautifully hydrated.

MOQ 10,000 units.



BENCHMARK
Glow Boosting Mask
ORIGINS
75ml
\$39.00

ABIES CALM & CLEAN MASK

Key Ingredients:
Aabies Balsamea Extract + Dendrobium
Skbrella™ Calm
Patent Cica Extract

This soothing clay mask combines Abies Extract and Dendrobium Clay for effective cleanse, making it ideal for sensitive skin. The dual plant clay formula purifies and maintains skin balance, preventing dryness. Enriched with Patent Skbrella™ Calm, it delivers antioxidant protection and calms irritation, while highly active Cica provides deep soothing. PWith a sandy, soft, and slightly muddy texture, this mask offers a comforting skincare experience, leaving the skin purified, repaired, and deeply nourished.

MOQ 10,000 units.



ROSE HYDRA SLEEPING MASK

Key Ingredients:
Rose Water
Bletilla Extract
Purslane Extract
Hydration Complex

This luxurious toner harnesses the power of 100% Saturated Rose Water that naturally hydrates and balances the skin’s pH. Bletilla extract, rich in glucans, provides deep hydration. Purslane extract and Beta Glucan work together to soothe, repair, and protect against UV damage. The advanced Hydration Complex delivers immediate and long-lasting moisture. Achillea Millefolium Extract enhances skin softness and helps reduce the appearance of wrinkles.

MOQ 10,000 units.




VITAMIN C BRIGHT POLISHING MASK

Key Ingredients:
Jojoba Seed Oil
Meadowfoam Seed Oil
Sugarcane Squalane
Niacinamide

This snowy, creamy-textured cleanser with lemon essential oil brightens dull yellow skin while gently exfoliating and polishing for a smoother, more radiant complexion. Powered by oil-cream emulsification technology, it effectively solubilizes oil, dirt, and blackheads without drying the skin.


Infused with over 30% nourishing oils—jojoba seed oil, meadowfoam seed oil, and sugarcane squalane—it deeply hydrates while promoting a healthy glow. Macromolecular AHA-sulfonic acid encourages gentle exfoliation and epidermal renewal, leaving the skin soft, refreshed, and visibly brighter. Experience cleansing, rejuvenation, and brightening in one luxurious step.

MOQ 10,000 units.



BENCHMARK

Superberry Hydrate + Glow Dream
Youth To The People
59ml
\$49.56





hero ingredient library

Our Hero Ingredient Library is a carefully curated selection of powerful, science-backed ingredients that drive the efficacy of skincare and cosmetic formulations. Each ingredient is chosen for its unique benefits, ranging from hydration and barrier protection to brightening and anti-aging properties.

Ingredient-focused skincare brands highlight key active ingredients, catering to informed consumers. They prioritize transparency, efficacy, and affordability, offering targeted solutions without the luxury price tag.



Transparency

Provide detailed information about the ingredients used in their products, including their sources and benefits. This empowers consumers to make informed choices based on their skin needs.



Efficacy

Ingredient-focused brands conduct research and utilize clinically proven components such as retinoids, peptides, hyaluronic acid, and antioxidants. Their formulations aim to deliver visible results for issues.



Affordability

By cutting out excess marketing and packaging costs, these brands offer high-quality products at more accessible prices, making effective skincare available to a broader audience.



Minimalism

Embrace a minimalist approach, prioritizing a select number of high-performance ingredients rather than overwhelming consumers with extensive product lines. This strategy ensures targeted solutions while eliminating unnecessary additives.

PEPTIDE FACE CREAM

Key Ingredients:
Skbrella™ FN 0.5%
Argireline® Peptide Solution 0.2%
Collagen 0.01%

This advanced anti-aging formula features Argireline® to reduce wrinkles, Skbrella™ FN to repair and restore elasticity, and Type III collagen to support firmness. Its velvety matte W/O emulsion locks in moisture without heaviness, creating a non-greasy, nourishing barrier. Ideal for dry or aging skin, it targets fine lines, wrinkles, and dryness for a smooth, revitalized complexion.

MOQ 10,000 units.



1% PEPTIDE EYE CREAM

Key Ingredients:
Niacinamide 1%
Caffeine 0.5%
WKPeP®SRPeptides 1%

This high-adherence eye cream features a creamy texture that melts into the skin, forming a soft, cushion-like barrier. Infused with 1% WKPeP®SR, a powerful complex of six peptides, it enhances skin regeneration. Niacinamide and Caffeine work together to brighten, boost circulation, and reduce the appearance of dark circles for a refreshed, youthful look.

MOQ 10,000 units.



PEPTIDE LIP BALM

Key Ingredients:
MAXI-LIP™ MBAL 0.05%
Hyaluronic Acid 0.05%
Shea butter 0.2%

An essential step in any anti-aging routine, this lip treatment protects and nourishes delicate lips. Formulated with Maxi-Lip™, a natural peptide that boosts collagen and hyaluronic acid synthesis, it enhances volume and smoothness. Hyaluronic Acid and Shea Butter provide deep hydration, forming a protective barrier for softer, more defined lips.

MOQ 10,000 units.



BENCHMARK
Atoderm Lip Balm
BIODERMA
15ml
\$25.00



G.A 7% EXFOLIATING TONER

Key Ingredients:
Glycolic Acid 7%
Hyaluronic Acid 0.02%

Regular use of Glycolic Acid promotes cell turnover, reducing roughness and uneven texture while minimizing the appearance of enlarged pores. At a lower pH, it effectively loosens dead skin cells, preventing dullness and clogged pores. With a pKa of 3.6, it maintains an optimal balance of acidity for maximum efficacy, revealing smoother, more radiant skin.

MOQ 10,000 units.



BENCHMARK
Glycolic Acid 7% Exfoliating Toner
The Ordinary
100ml
\$14.99



MULTI-PEPTIDE + COPPER 1% SERUM

Key Ingredients:
Argireline® Peptide Solution 0.01%
Copper Peptide 1%
Matrixyl 3000 ® 0.01%
Bifida Ferment Filtrate 15%

This water-based formula harnesses the power of Copper Peptides and Bifida Ferment Filtrate to improve fine lines, skin texture, and overall signs of aging. Rich in anti-aging and antioxidant benefits, it strengthens the skin barrier while absorbing effortlessly without interfering with other skincare products. An innovative ingredient gaining attention, Copper Peptides help restore youthful, healthy-looking skin.

MOQ 10,000 units.



BENCHMARK
Multi-Peptide 1% Serum
The Ordinary
30ml
\$22.10



AHA 30% + BHA 2% SOLUTION

Key Ingredients:
Hyaluronic Acid 0.1%
D-panthenol 0.5%
Salicylic Acid 2%
Glycolic Acid 30%

The Peeling Solution blends AHA and BHA to exfoliate multiple skin layers, refining texture, clearing pores, and brightening uneven pigmentation. Infused with Hyaluronic Acid and D-Panthenol, it hydrates and minimizes irritation. With a pKa of 3.6, Glycolic Acid ensures optimal exfoliation. This high-strength formula is recommended for experienced users with non-sensitive skin.

MOQ 10,000 units.



BENCHMARK
AHA 30% + BHA 2% Peeling Solution
The Ordinary
30ml
\$9.50



MATRIXYL 10% + HA

Key Ingredients:
Matrixyl 3000® 10%
Hyaluronic Acid 0.5%

Matrixyl 10% + HA is an advanced serum designed to target fine lines and wrinkles while promoting firmer, plumper skin. Formulated with two generations of Matrixyl™ and Hyaluronic Acid, it supports collagen production to improve skin elasticity and smoothness. With 10% Matrixyl 3000® and 0.5% Hyaluronic Acid, this lightweight, fast-absorbing formula helps restore hydration and resilience, making it an essential step in any anti-aging routine.

MOQ 10,000 units.



ARGIRELINE SOLUTION 10%

Key Ingredients:
Argireline® Peptide Solution 10%

A powerful peptide formula that mimics Botox-like effects by reducing muscle activity that causes fine lines and wrinkles. Featuring Argireline® peptide, it selectively blocks ACH release at the neuromuscular junction by cleaving the SNAP-25 protein, preventing wrinkle formation. This advanced solution smooths expression lines for a youthful, rejuvenated appearance.

MOQ 10,000 units.



NIACINAMIDE 10% + ZINC 1%

Key Ingredients:

Niacinamide 10%
Zinc 1%

Niacinamide, a form of Vitamin B3, enhances the skin's moisture retention and supports a healthy skin barrier. It strengthens hydration, improves smoothness, and soothes irritation with its anti-inflammatory properties. Additionally, it helps minimize the appearance of blemishes, enlarged pores, and redness for a more even complexion.

MOQ 10,000 units.



VITAMIN C 10%

Key Ingredients:

Vitamin C 10%

Also known as Ascorbic Acid, Vitamin C is a powerful antioxidant that brightens the skin, evens out skin tone, and reduces pigmentation. It helps slow early signs of aging while promoting a radiant, illuminated complexion. With continued use, skin appears visibly glowing, smooth, and youthful.

MOQ 10,000 units.



HYALURONIC ACID 2%

Key Ingredients:
Hyaluronic Acid 2%

This hydrating formula instantly plumps and smooths the skin, delivering deep moisture for a refreshed and supple feel. It enhances the skin’s natural radiance, leaving it revitalized and luminous. With continued hydration, fine lines and wrinkles appear visibly softened, promoting a youthful and healthy-looking complexion.

MOQ 10,000 units.



RETINOL 0.3%

Key Ingredients:
Retinol 0.3%

This advanced formula helps firm the skin, smoothing the appearance of fine lines and wrinkles for a more youthful look. It works to refine skin texture, revealing a vibrant and healthy complexion. By targeting uneven skin tone and hyperpigmentation, it promotes a brighter, more even appearance while enhancing overall skin radiance.

MOQ 10,000 units.





SPF Library

Our SPF collection features advanced sun protection formulas designed to shield the skin from harmful UVA and UVB rays while providing additional skincare benefits. From lightweight daily sunscreens to high-performance, water-resistant formulas, each product is infused with nourishing ingredients like antioxidants, hydrating agents, and skin-soothing extracts.

MILD SUNSCREEN SPF30 PA+++

Key Ingredients:
Titanium dioxide
Zinc Oxide
Skbrella™ CT (Centella Asiatica Extract)
Hyaluronic acid

Perfect for daily use, it helps protect against sunburn and premature aging, ensuring your skin stays healthy and radiant all day long. Powered by Titanium Dioxide and Zinc Oxide, this sunscreen provides broad-spectrum protection using only physical filters. Infused with Skbrella™ CT (Centella Asiatica Extract), it soothes and calms the skin, while Hyaluronic Acid locks in moisture for long-lasting hydration. Gentle yet effective, this formula is designed to nourish, shield, and replenish your skin with every application.

MOQ 10,000 units.



WEIGHTLESS SPF50 PA++++

Key Ingredients:
MBBT Titanium Dioxide
Hyaluronic Acid
Bisabolol

This advanced sunscreen combines chemical and physical UV filters to provide broad-spectrum protection against UVA and UVB radiation. Formulated with macromolecular sunscreen technology, this oil-free, fragrance-free formula is gentle enough for sensitive skin, including kids and adults. Enriched with Hyaluronic Acid for deep hydration and Bisabolol for soothing benefits, it leaves skin feeling moisturized, calm, and comfortable. The ultra-lightweight texture absorbs quickly, providing a smooth, invisible finish without a greasy residue.

MOQ 10,000 units.



LIGHTWEIGHT LOTION SPF50 PA+++

Key Ingredients:

- Octinoxate
- Skbrella™ CT (Centella Asiatica Extract)
- Skbrella™ CJ (Camellia Japonica Flower Extract)
- Hyaluronic acid



This advanced sunscreen offers broad-spectrum protection by absorbing both UVA and UVB radiation, shielding your skin from premature aging caused by harmful UV rays. The non-greasy, shine-control formula enhances the skin’s natural radiance while seamlessly blending without leaving white marks or a visible cast. Engineered for reliability, it remains effective even during water exposure or perspiration.

Infused with Octinoxate, OCTOCRYLENE, Ethylhexyl Salicylate, Uvinul A Plus, BEMT, and MBBT, it provides superior sun defense. Additionally, Skbrella™ CT (Centella Asiatica Extract) and Skbrella™ CJ (Camellia Japonica Flower Extract) offer soothing and antioxidant benefits, while Hyaluronic Acid deeply hydrates, leaving skin nourished, refreshed, and revitalized.

MOQ 10,000 units.

WHITENING SPF25 PA+++

Key Ingredients:
Titanium Dioxide
Niacinamide 2%
Skbrella™ CT (Centella Asiatica Extract)

This Whitening Sun Fluid SPF25 PA+++ combines chemical and physical sunscreens to provide broad-spectrum UVA and UVB protection while enhancing skin radiance. Formulated with Octinoxate, Ethylhexyl Salicylate, Ensulizole, Uvinul A Plus, MBBT, and Titanium Dioxide, it shields the skin from sun damage while Niacinamide 2% brightens and evens skin tone. Infused with Skbrella™ CT (Centella Asiatica Extract), it delivers soothing care, reducing irritation for a calm, refreshed complexion.

MOQ 10,000 units.



LIGHT SHIELD SPF25 PA++

Key Ingredients:
Octinoxate
Niacinamide 2%
Bisabolol

This SPF Moisturizer delivers broad-spectrum UVA & UVB protection while hydrating and brightening the skin. Formulated with Octinoxate, Octocrylene, Ethylhexyl Salicylate, Uvinul A Plus, and MBBT, it shields against environmental aggressors, pollution, and infrared rays to help preserve youthful skin. Niacinamide 2% and Bisabolol work together to soothe, brighten, and even skin tone, reducing signs of fatigue and dullness. The antioxidant-rich formula helps delay visible aging, keeping skin, smooth, and youthful-looking.

MOQ 10,000 units.



SPRAY LOTION SPF50 PA++++

Key Ingredients:
Octinoxate
Tinosorb® M
Titanium Dioxide
Glycerin

This SPF 50 PA++++ sunscreen offers powerful UVA & UVB protection with a blend of chemical and physical filters. Its lightweight, fast-absorbing formula leaves no white cast, ensuring a seamless application. Infused with 3% glycerin, it provides deep hydration, keeping skin soft and moisturized throughout the day. The addition of 0.3% bisabolol delivers soothing benefits, making it suitable for sensitive skin. With a refreshing scent, this sunscreen enhances your daily routine while remaining paraben-free, sulfate-free, and dye-free for a gentle, skin-friendly experience.

MOQ 10,000 units.



SUNCARE MIST SPF 30 PA++++

Key Ingredients:
Avobenzone BEMT
Bisabolol

This SPF 30 PA++++ suncare mist with Boots 5-Star UVA protection delivers broad-spectrum defense against harmful UVA & UVB rays. Powered by fast-absorbing chemical filters, it provides a transparent, non-greasy finish with no white cast. Infused with 0.1% Vitamin E, this mist offers hydration and antioxidant protection, shielding skin from environmental stressors. The addition of 0.2% bisabolol delivers soothing and calming effects, making it ideal for sensitive skin. Free from parabens, sulfates, and dyes, ensuring a gentle yet effective sun protection experience.

MOQ 10,000 units.



SUNSCREEN LIP BALM SPF30

Key Ingredients:
Olive oil 5%
Shea butter 5%
Vitamin E 0.2%
Skbrella™ Protection Shield 1.5%

Infused with 5% olive oil and 5% shea butter, it delivers intense moisture, preventing dryness and chapping. The addition of 0.2% Vitamin E provides antioxidant benefits, helping to repair and protect delicate lip skin from free radical damage. Powered by Skbrella™ Five-Dimensional Skin Protection Shield (1.5%), this lip balm strengthens the skin barrier while offering superior defense against harmful UVA and UVB rays with SPF 30. Its smooth, non-sticky texture glides effortlessly, leaving a comfortable, long-lasting layer of hydration and protection.

MOQ 10,000 units.



BENCHMARK
High Protection SPF 30 Lip Balm
Avene
3g
\$8.43

PROTECTIVE LOTION SPF50 PA+++

Key Ingredients:
Octinoxate
Ethylhexyl Triazone Avobenzone
Bisabolol 0.1%
Film forming agent

Formulated with a powerful blend of UV filters, including Octinoxate, Octocrylene, Ethylhexyl Salicylate, Ethylhexyl Triazone, and Avobenzone, it provides broad-spectrum protection against UVA and UVB rays, preventing sunburn and premature aging. Infused with 0.1% Bisabolol, it delivers soothing benefits, calming the skin while keeping it protected. The film-forming agent ensures a non-sticky, lightweight texture that adheres well to the skin, making it resistant to water and sweat for long-lasting defense.

MOQ 10,000 units.



BENCHMARK
Lotion Protect & Moisture SPF 50+
NIVEA
200ml
\$25.00

A close-up, low-angle portrait of a woman's face, tilted slightly upwards. Her skin is exceptionally smooth and has a natural-looking glow, with visible pores and a soft sheen. She has light-colored eyes, possibly blue or grey, with subtle pink eyeshadow. Her lips are coated in a glossy, reddish-pink lipstick. Her hair is dark and pulled back, with some strands framing her face. The background is a solid, dark grey or black, which makes the subject stand out. The lighting is soft and directional, coming from the upper left, highlighting the contours of her face and the texture of her skin.

base makeup

Our base makeup collection is designed to enhance natural beauty while providing skincare benefits. From lightweight tinted moisturizers to high-coverage foundations, each formula is crafted for a flawless, long-lasting finish. Infused with skin-loving ingredients like hyaluronic acid for hydration, niacinamide for brightening, and squalane for nourishment, our products cater to various skin types and concerns.

SATIN CREAM CONCEALER

Key Ingredients:

- Ceramide
- Avocado Oil
- Vitamin E
- Shea Butter

Infused with Ceramides, it strengthens and protects the skin’s natural barrier, promoting deep hydration and preventing moisture loss. Shea Butter nourishes and soothes, leaving the skin soft, smooth, and supple, while Avocado Oil, rich in antioxidants and essential fatty acids, provides intense hydration. Vitamin E, a powerful antioxidant, helps defend against free radical damage, ensuring skin stays healthy and radiant. Resistant to water and sweat, this formula offers long-lasting coverage.

MOQ 10,000 units.



PERFECT SKIN PRIMER

Key Ingredients:

- Betaine
- Rosa Damascena Flower Water
- Sodium Hyaluronate

The Peach shade enhances the complexion with an immediate brightening effect and all-day luminosity. Formulated with Betaine, helps maintain skin’s moisture balance, and Rosa Damascena Flower, which hydrates and refreshes for a soft, supple feel. Sodium Hyaluronate, known for its exceptional water-binding properties, draws moisture into the skin, ensuring high hydration. Designed to keep makeup vibrant and fresh for up to 16 hours, it instantly minimizes the appearance of fine lines and wrinkles for a smooth, flawless finish.

MOQ 10,000 units.



VITAMIN TINTED MOISTURIZER

Key Ingredients:

- Sodium Hyaluronate
- Vitamin C
- Vitamin E
- Jojoba Seed Oil



This encapsulated skincare-infused tinted moisturizer combines the power of Hyaluronic Acid, Vitamin C & E, and Jojoba Oil to provide a lightweight, hydrating formula that instantly brightens the skin. Hyaluronic Acid draws moisture into the skin, helping to maintain hydration levels, while Vitamin E protects from free radicals, promotes healing, and supports overall skin vitality.

Vitamin C brightens the skin by reducing pigmentation and uneven skin tone, leading to a more radiant complexion, while Jojoba Seed Oil moisturizes, balances oil production, and improves the skin’s texture and appearance. Micro-droplets of encapsulated vitamin C melt into the skin on contact, creating a radiant, bare-skin effect.

This moisturizer offers a blurring and smoothing effect that unifies the complexion, providing lightweight, sheer coverage that allows the skin’s natural beauty to shine through.

FEATHER WEIGHTLESS MESH CUSHION SPF25 PA++

Key Ingredients:

Jojoba seed Oil
Avocado Oil
Squalane

Coverage: Low
Suitable Skin Type: Dry
Luminosity: Shimmer
Finish: Natural, semi-matte



BENCHMARK
Touche Éclat Glow-Pact
YSL
12g
\$89.00

This tinted moisturizer offers low coverage with a natural, semi-matte finish and a touch of luminosity that creates a soft, glowing appearance. Ideal for dry skin, it features a moisturizing formula that delivers hydration and comfort throughout the day. Enriched with Jojoba Seed Oil, it nourishes the skin, balances oil production, and enhances texture. Avocado Oil provides deep hydration and antioxidant protection, leaving the skin glowing and promoting a healthy complexion. Squalane, a lightweight and non-greasy oil, hydrates and softens the skin while improving its overall texture.

The formula also includes dual powders, featuring amino acid-treated moisturizing powder and silicone-treated waterproof and sweat-resistant powder, ensuring a hydrating finish that stays comfortable all day. Resilient, anti-smudge film-forming agents create a durable and flexible film on the skin, allowing for long-lasting makeup that resists fading and smudging.

HIGH COVER LASTING-MATTE MESH CUSHION SPF 30 PA+++

Key Ingredients:
Vitamin C
Vitamin E
Hydrolyzed Wheat Protein

Coverage: Medium
Suitable Skin Type: Combination to Oily / Oily
Luminosity: Matte
Finish: Velvet



This medium-coverage foundation is designed for combination to oily skin, delivering a matte, velvet finish that controls oil and minimizes shine without feeling heavy. Infused with Sodium Ascorbyl Phosphate (SAP), a stable form of Vitamin C, it brightens the skin, evens out tone, and promotes a youthful complexion. Hydrolyzed Wheat Protein enhances elasticity, improves moisture retention, and smooths the skin, while Vitamin E provides antioxidant protection and supports overall skin vitality.

Formulated for long-lasting wear, this foundation features an antioxidant system that shields the skin from environmental stressors. Elastic microspheres create a soft, blurring effect, reducing the appearance of imperfections, while film-forming agents ensure a flawless, naturally radiant look that lasts all day.

SILKY LIFT FOUNDATION

Key Ingredients:

Hyaluronic Acid
Vitamin E

This medium-coverage foundation is perfect for normal to dry skin, delivering a luminous, satiny finish that enhances your natural glow. Infused with Hyaluronic Acid, it provides deep hydration, helping the skin retain moisture for a plump, healthy appearance. Vitamin E offers antioxidant protection, supporting skin healing and overall vitality.

The silky, long-lasting formula glides on smoothly, creating a breathable, lightweight finish while regulating oil production for balanced hydration. It delivers a moisturizing effect without feeling greasy, ensuring comfort throughout the day. Utilizing ASG amino acid surface treatment technology, this foundation provides a creamy, nourishing sensation, leaving the skin soft, supple, and naturally radiant.

Coverage: Medium
Suitable Skin Type: Normal to Dry/Dry
Luminosity: Luminous
Finish: Satiny



INTENSIVE SERUM FOUNDATION

Key Ingredients:

- Extracts Of Centella Asiatica
- Polygonum Cuspidatum Root
- Scutellaria Baicalensis Root
- Green Tea
- Glycyrrhiza Glabra Root
- Matricaria Chamomilla Flower
- Rosemary Leaf



BENCHMARK
Phyto-Teint Nude
SISLEY
30ml
\$35.55



Coverage: Medium
Suitable Skin Type: Normal to Dry/Dry
Luminosity: Natural
Finish: Velvet

This medium-coverage Intensive Serum Foundation is designed for normal to dry skin, offering a natural, velvet finish with skincare benefits. Enriched with Cordyceps extract and a blend of 7 botanical ingredients, it nourishes the skin while providing a flawless, non-greasy complexion.

Infused with Centella Asiatica, Polygonum Cuspidatum Root, Scutellaria Baicalensis Root, Green Tea, Licorice Root, Chamomile Flower, and Rosemary Leaf Extracts, this foundation helps soothe, protect, and revitalize the skin, preventing dullness and promoting a radiant glow.

Its smooth and silky texture glides effortlessly onto the skin, delivering a fine, satin-like finish without feeling heavy. With long-lasting wear, it enhances the skin’s natural luminosity while ensuring comfort and hydration throughout the day.

FLAWLESS MATTE LONGWEAR

Key Ingredients:

Shea Butter
Vitamin E
Squalane

This high-coverage foundation is ideal for combination to oily skin, delivering a matte, flawless finish while maintaining a lightweight feel.

Formulated with Shea Butter, Vitamin E, and Squalane, it nourishes, protects, and hydrates the skin while improving overall texture. Its micronized powder particles ensure natural-looking coverage, effectively concealing imperfections without a heavy or cakey effect.

Designed for oil control, this non-sticky, non-greasy, and non-drying formula seamlessly covers pores, blemishes, and redness, creating a smooth and refined complexion. With long-lasting staying power, it keeps makeup fresh and intact for up to 8 hours without fading or transferring.



Coverage: High
Suitable Skin Type: Combination to Oily / Oily
Luminosity: Matte
Finish: Flawless

PROTECTIVE MATTE SPF30 PA+++

Key Ingredients:

Shea Butter
Niacinamide

Coverage: Medium
Suitable Skin Type: Combination to Oily / Oily
Luminosity: Matte
Finish: Natural, semi-matte

This medium-coverage foundation is designed for combination to oily skin, offering a natural, semi-matte finish that balances oil while maintaining a lightweight feel.

Infused with Hyaluronic Acid and Niacinamide, it hydrates, strengthens the skin barrier, and enhances moisture retention while protecting against environmental stressors.

Its ultra-fine powders blend seamlessly, creating a smooth, even complexion without a heavy or cakey effect. The water-rich formula ensures excellent spreadability, providing a refreshing and moisturizing sensation upon application while keeping shine under control for a flawless, long-lasting look.



READY TO MARKET RELEASES '25

WWW.GLOBAL-COSMETICS.COM

